

TECHNICAL DATA SHEET

WX

Application

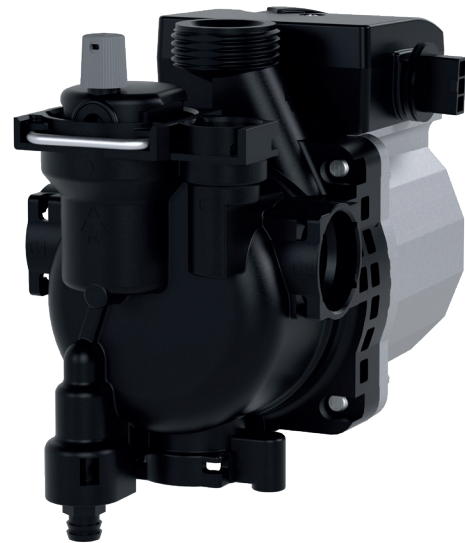
Bu ürün serisi, gazlı duvar tipi kombiler, elektrikli duvar tipi kombiler soğuk ve sıcak su sirkülasyon sistemleri için uygundur.

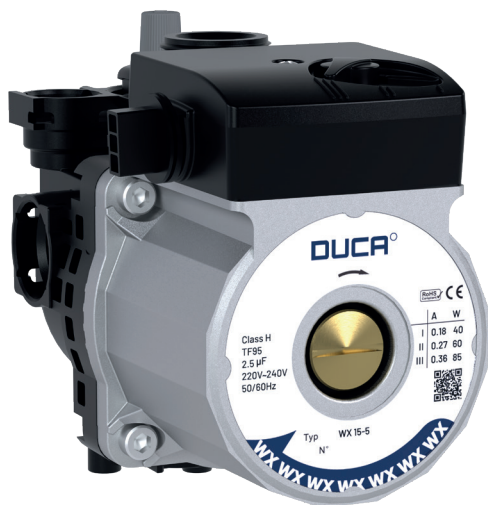
Main features

- $EEL \leq 0.21$ Part3
- High insulation Small size and light weight
- Low noise, high sealing
- PWM speed control / 3-stage speed control
- Built-in resistance valve / automatic air release function
- Multiple pump casing assembly methods

Working condition

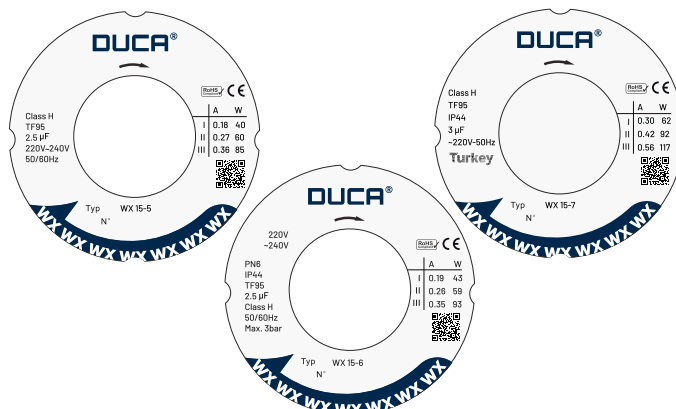
- Liquid temperature: $2^{\circ}\text{C} \sim 95^{\circ}\text{C}$
- Ambient temperature: $0 \sim +40^{\circ}\text{C}$
- Max system pressure: 10bar
- Protection level: IP44
- Rated voltage/frequency: 220V~240V/50 veya 60Hz
- Insulation class : H
- Pumped liquid characteristics: clean liquid, free from solids and mineral oils, non-toxic, chemically neutral, close to the characteristics of water
- Installation: the motor shaft must be kept in horizontal direction





WX 15-5/6/7

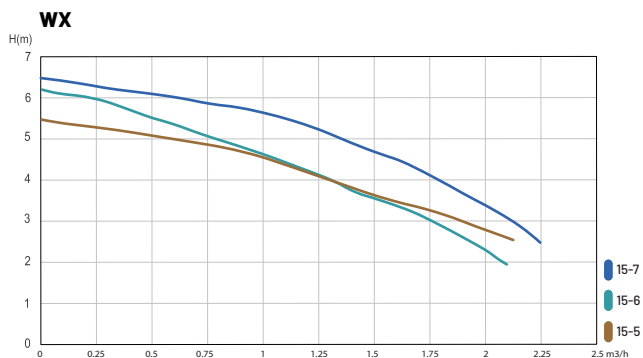
Nameplate



Max. Flow
2.3 m³/h

Max. Head
8m

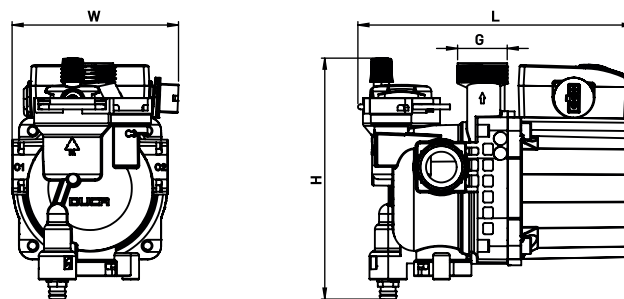
Performance Curve



EEL ≤ 0.21



Dimensions



W 100 mm
L 166 mm
H 145 mm

G 1"

Different models

| Model | Min/Max Temp. (°C) | Max. Flow | Max. Head | P1 Max | Voltage (V) | Rated Current (A) |
|----------|--------------------|-----------------------|-----------|--------|-------------|-------------------|
| WX 15-50 | +2 - +95 | 2m ³ /h | 5m | 85W | 230 | 0.18-0.36 |
| WX 15-60 | +2 - +95 | 2m ³ /h | 6m | 93W | 230 | 0.19-0.35 |
| WX 15-70 | +2 - +95 | 2.25m ³ /h | 7m | 117W | 230 | 0.30-0.56 |