

COSMO XL



Application

For domestic hot water system such as mix water underfloor heating system, air energy hot water circulation system, solar hot water circulation system and family hot, cold water pressurization circulation, etc.

EEI ≤ 0.23



HIGHER FLOW

Main features

- 'A' Nominal energy efficiency lowest power consumption
- Permanent magnet aluminium die-cast housing motor, intelligent frequency control
- Compact design with control box integrated in the pump head
- Proportional pressure, constant pressure, constant speed mode
- Low noise operation

Working condition

- Maximum Ambient Temperature: +40 °C
- Protection Level: IP44
- Mains Connection: 220V~240V /50hz
- Insulation Class: F
- Pumped Liquid Properties:
 - Clean, Solids and Mineral Oil Free,
 - Non-toxic, Chemically Neutral,
 - Close to Water Features

Functions for different model





Model	Internal control			External control
	PP	CP	CS	PWM
COSMO-XL 32/25-8-180	I, II, III	I, II, III	I, II, III	AUTO



COSMO XL

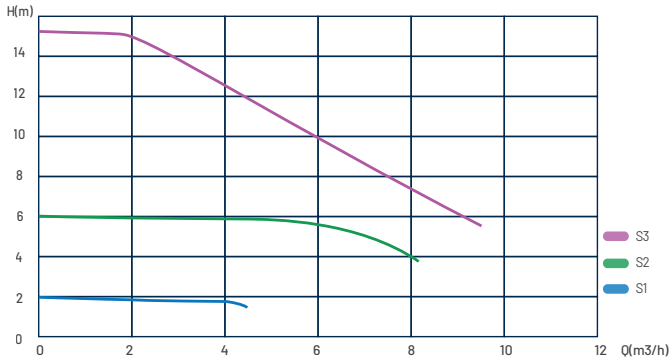
25/32-15-180

Nameplate

DUCA [®]				
COSMO-XL 25/32-15-180				
Serial No.			 <small>SCAN ME</small>	
Class F	220-240V			
TF95	50/60Hz			
IPX4	1.0MPa			
	H _(m)	P _(W)	I _(A)	Q _(m³/h)
MIN	-	20	0.20	-
MAX	15	320	1.60	9,5
EEI ≤ 0.23 High Efficiency Circulation Pump				 
				

Max. Flow Rate **Max. Pump Head**
 9,5 m³/h 15m

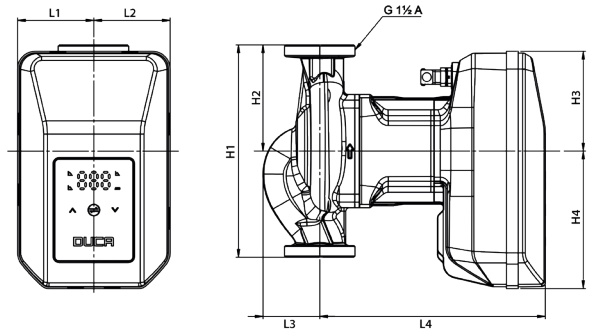
Performance Curve



EEI ≤ 0.23



Dimension



- | | |
|------------------|------------------|
| H1 180 mm | L1 65 mm |
| H2 90 mm | L2 65 mm |
| H3 85 mm | L3 48 mm |
| H4 117 mm | L4 191 mm |

Model Information

Model	Min/Max Temp (°C)	L (mm)	DN	P1 Max	Voltage (V)	Rated Current (A)	Union (G)
25-15-180	-2 to +110	180	DN25	320W	230	0.2-1.6	G1½ to G1
32-15-180	-2 to +110	180	DN32	320W	230	0.2-1.6	G2 to G1½